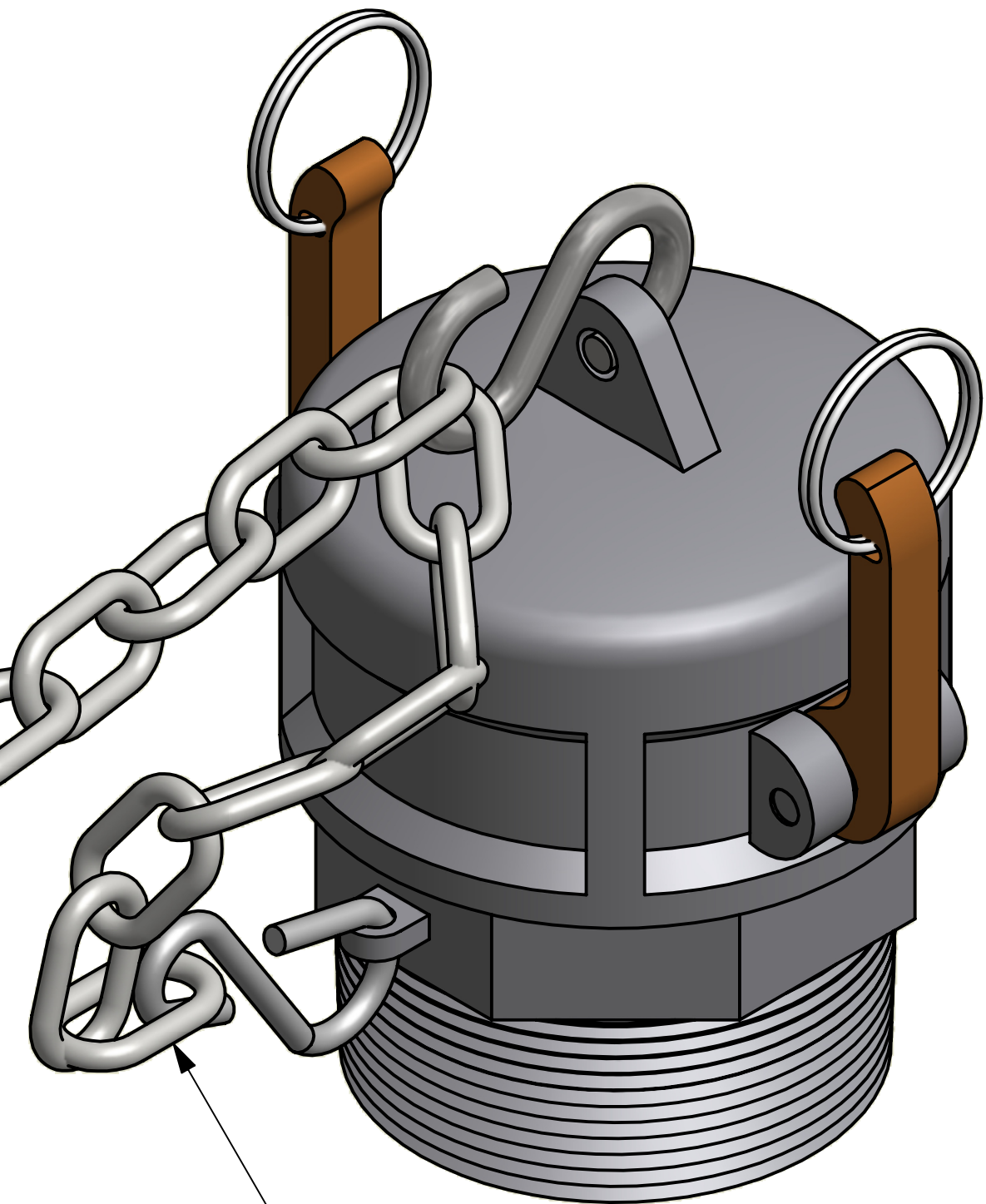
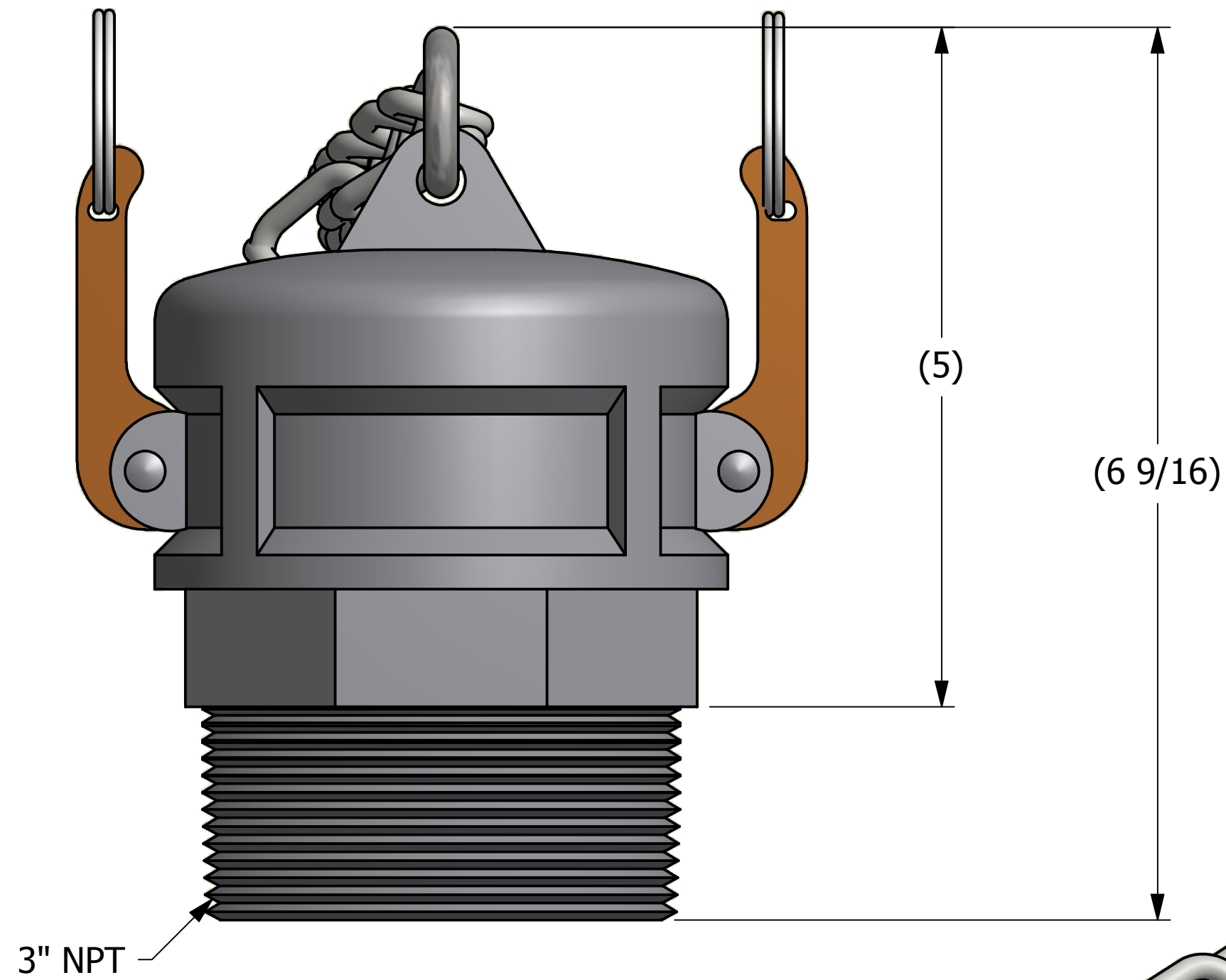


NOTE:
GASKET IS BLACK VITON B.



3" NPT

21 LINKS ACTUAL

7 LINKS ACTUAL

SALES DRAWING

SALES DRAWING

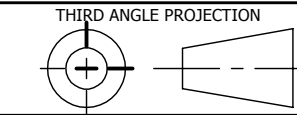
B	RJP	6-12-14	UPDATED K30IDC7A DESIGN
A	WEB	5-10-13	RELEASED FOR PRODUCTION
REV	BY	DATE	DESCRIPTION

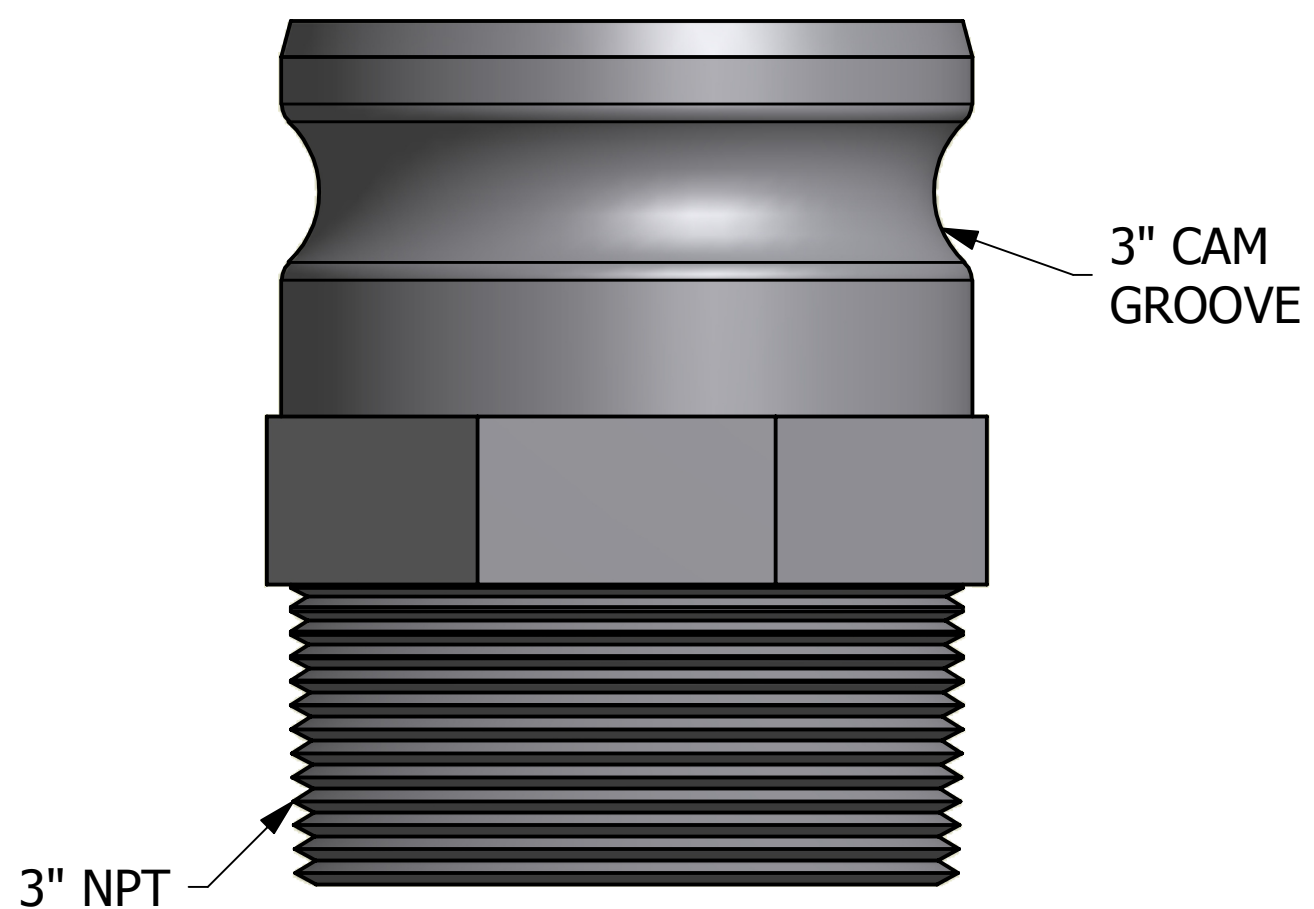
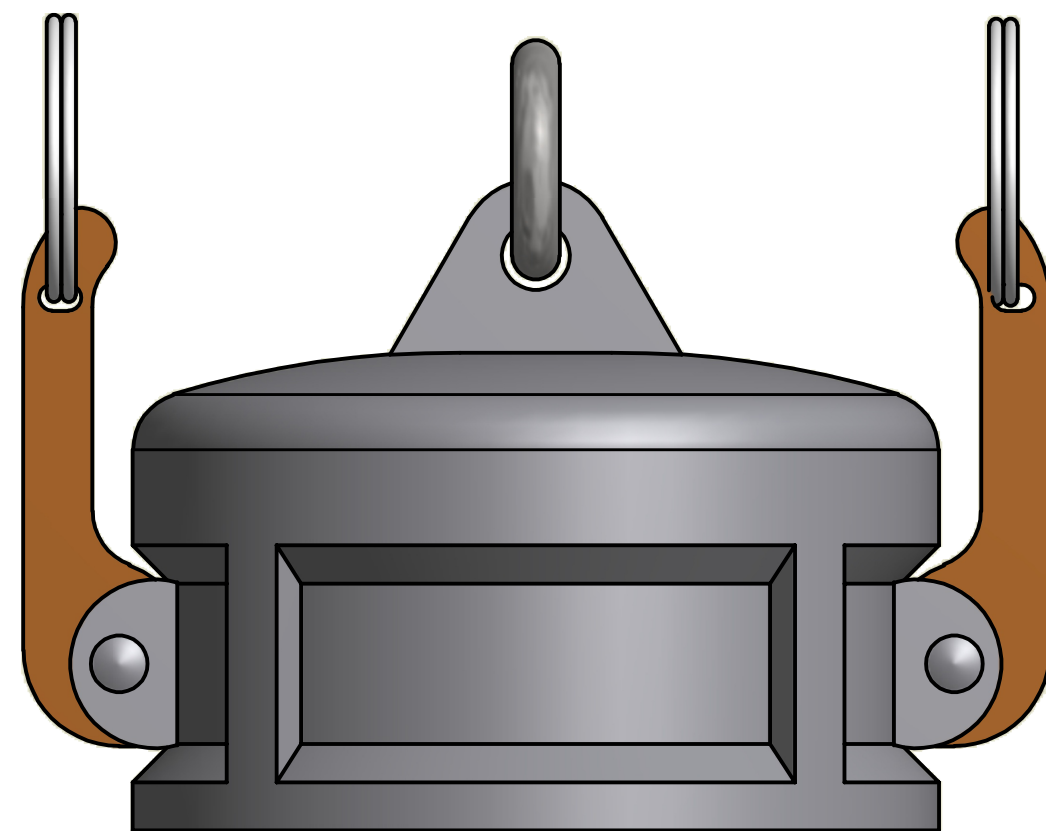
<small>UNLESS OTHERWISE SPECIFIED DIMENSIONAL TOLERANCES FRACTIONAL: ±1/16 X.XX: ±.03 X.XXX: ±.015 ANGLE: ±1° DEBURR ALL SHARP EDGES. ALL MACHINED SURFACES TO HAVE A 125 RMS FINISH UNLESS NOTED OTHERWISE.</small>	DRAWN BY:	WEB
	CHECKED BY:	CHL
	PROTOTYPE BY:	WEB
	PROTOTYPE DATE:	5/10/2013
	APPROVED FOR PRODUCTION BY:	WEB
	PRODUCTION DATE:	5/10/2013



PART NAME: TOP FITTING ASSEMBLY 3" THREAD ON		
MATERIAL: DUCTILE IRON		
PROJECT #: 130510FR	SHEET #: 1 OF 2	SCALE: 1:1
DRAWING #: C36294	PART #: K30IUMP7A	


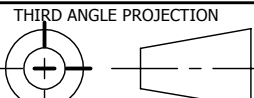
THIS PRINT, PROPERTY OF SALCO PRODUCTS INC., CONTAINS PROPRIETARY INFORMATION AND MUST NOT BE COPIED, REPRODUCED, OR USED DETRIMENTALLY TO OUR INTEREST.





SALES DRAWING

SALES DRAWING

UNLESS OTHERWISE SPECIFIED DIMENSIONAL TOLERANCES FRACTIONAL: $\pm 1/16$ X.XX: $\pm .03$ X.XXX: $\pm .015$ ANGLE: $\pm 1^\circ$ DEBURR ALL SHARP EDGES. ALL MACHINED SURFACES TO HAVE A 125 RMS FINISH UNLESS NOTED OTHERWISE.	DRAWN BY:	WEB		
	CHECKED BY:	CHL		
	PROTOTYPE BY:	WEB	PART NAME:	
	PROTOTYPE DATE:	5/10/2013	TOP FITTING ASSEMBLY 3" THREAD ON	
	APPROVED FOR PRODUCTION BY:	WEB	MATERIAL:	DUCTILE IRON
THIRD ANGLE PROJECTION 	PRODUCTION DATE:	5/10/2013	PROJECT #:	130510FR
			SHEET #:	2 OF 2
			SCALE:	1:1
			DRAWING #:	C36294
			PART #:	K30IUMP7A

THIS PRINT, PROPERTY OF SALCO PRODUCTS INC., CONTAINS PROPRIETARY INFORMATION AND MUST NOT BE COPIED, REPRODUCED, OR USED DETRIMENTALLY TO OUR INTEREST.